

Special Cash

FOR
FRIDAY AND SATURDAY

February 14 and 15

Buy Your Groceries Now and Save

15 lbs. Cape Sugar	\$1.00
Flour per sack	1.05
Tomatoes per can	10c
Peas	10c
Com. 3 cans for	25c
Walnuts per lb.	20c
Good Brooms each	75c
Columbia Cans per package	30c
Wheat	30c
Com Meal per sack	30c
Fine Oil	1.00
Eight bars Soap	25c
Potatoes per 100 lbs.	85c
\$1.00 can Coffee	50c
65c	50c
30c Coffee per lb.	25c
25c can Pork and Beans	15c

Remember these prices are for two days only, so buy while you can.

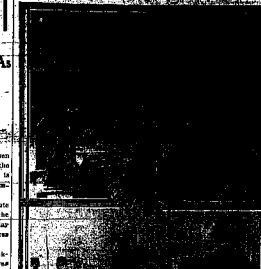
A. D. HUNT

At Palace Market

PRO DECLARES HE WILL NOT RESIGN YET

Of Mexico Will Be On the Job As As Life Lasts Is His Statement. Fighting Now With Back To the Wall.

E. H. Amer Rivals Edison in Inventing Talking Movies



Washington, Feb. 14.—The inventor of the talking motion picture, E. H. Amer, today declared that he would not resign from his position as president of the Amer Talking Picture Co., until his life is no longer tenable.

Amer, who is now in Mexico City, has been fighting a desperate struggle against the forces of revolution and banditry in the north of Mexico. He has been captured several times, but has always managed to escape.

His invention of the talking picture is considered one of the greatest contributions to the motion picture industry in recent years. It allows the audience to hear the dialogue of the characters in the film.

DISTRICT COURT DENIES SUIT

Washington, Feb. 14.—The District Court today denied a suit filed by the Standard Manufacturing Co. against the American Shipbuilding Co. for infringement of a patent.

The Standard Manufacturing Co. claimed that the American Shipbuilding Co. had used its patented process in the construction of ships.

The court found in favor of the American Shipbuilding Co., stating that the Standard Manufacturing Co. had not proven that its patent was valid and that the American Shipbuilding Co. had infringed on it.

AMERICAN SHIPS READY FOR W

Washington, Feb. 14.—American ships are now ready for war, and the government is preparing to send them to the front.

The Navy Department has announced that it has received orders from the War Department to send several American ships to the Mediterranean Sea.

These ships include the USS Oregon, the USS Alaska, and the USS Nevada. They are being sent to support the American forces in the region.

The ships are being equipped with the latest war equipment and are being crewed by the finest sailors in the Navy.

James Sw

Real Estate and Insurance
Signal Bldg.

THE OWYH

Only one in ten...

STRANGE BILL AS STRIKE REME

Washington, Feb. 14.—A strange bill for the relief of strikers is being introduced in the House of Representatives.

The bill, known as the "Striker Relief Bill," would provide for the payment of wages to strikers who are unable to work during their period of strike.

The bill has drawn considerable criticism from labor leaders and some members of Congress, who believe that it would encourage strikes and be a burden on the government.

Young Men

Young men are wanted for the U.S. Army.

WATER NOT FOR MEASURE

Water is to be measured...

Capt. Travis

1428

WATER NOT FOR MEASURE

Water is to be measured...

WATER NOT FOR MEASURE

Water is to be measured...

FOR FURTHER INFORMATION...

FOR FURTHER INFORMATION...

FOR FURTHER INFORMATION...

FOR FURTHER INFORMATION...

FOR FURTHER INFORMATION...

FOR FURTHER INFORMATION...

FOR FURTHER INFORMATION...

FOR FURTHER INFORMATION...

FOR FURTHER INFORMATION...

FOR FURTHER INFORMATION...

FOR FURTHER INFORMATION...

THE DAILY SIGNAL

Published Every Day Except Sundays and Public Holidays by the SIGNAL PUBLISHING COMPANY, Ltd. 40, South Street, Singapore.

Subscription Rates: Single Copies 10 Cents; Monthly 3 Dollars; Quarterly 10 Dollars; Half Yearly 18 Dollars; Yearly 35 Dollars.

Advertisements: First Column 10 Cents per Line; Second Column 8 Cents per Line; Third Column 6 Cents per Line; Fourth Column 4 Cents per Line.

Printed and Published by the SIGNAL PUBLISHING COMPANY, Ltd., at the Signal Press, 40, South Street, Singapore.

Telephone: 1111. Telegram: SINGAPORE. Cable: SINGAPORE.

Post Office: Registered as a Newspaper under the Presses Act, No. 10 of 1908.

Printed by the Signal Press, 40, South Street, Singapore.

Published by the Signal Press, 40, South Street, Singapore.

Printed by the Signal Press, 40, South Street, Singapore.

Published by the Signal Press, 40, South Street, Singapore.

Printed by the Signal Press, 40, South Street, Singapore.

Published by the Signal Press, 40, South Street, Singapore.

Printed by the Signal Press, 40, South Street, Singapore.

Published by the Signal Press, 40, South Street, Singapore.

Printed by the Signal Press, 40, South Street, Singapore.

Published by the Signal Press, 40, South Street, Singapore.

Printed by the Signal Press, 40, South Street, Singapore.

Published by the Signal Press, 40, South Street, Singapore.

Printed by the Signal Press, 40, South Street, Singapore.

Published by the Signal Press, 40, South Street, Singapore.

Printed by the Signal Press, 40, South Street, Singapore.

Published by the Signal Press, 40, South Street, Singapore.

Printed by the Signal Press, 40, South Street, Singapore.

Published by the Signal Press, 40, South Street, Singapore.

Printed by the Signal Press, 40, South Street, Singapore.

Published by the Signal Press, 40, South Street, Singapore.

Printed by the Signal Press, 40, South Street, Singapore.

Published by the Signal Press, 40, South Street, Singapore.

Printed by the Signal Press, 40, South Street, Singapore.

Published by the Signal Press, 40, South Street, Singapore.

Printed by the Signal Press, 40, South Street, Singapore.

WINTER AND WAR RIVALS IN MUSCLE

Bitter Cold as Factor in the Campaigns in Europe.

ARMIES WOUNDED BY FROST, BUT THEY GET THEIR MATCH.

By the Associated Press. The winter of 1914-15 has been a most trying one for the armies of the world. The campaigns in Europe have been marked by a bitter cold and a heavy snowfall.

The winter of 1914-15 has been a most trying one for the armies of the world. The campaigns in Europe have been marked by a bitter cold and a heavy snowfall.

The winter of 1914-15 has been a most trying one for the armies of the world. The campaigns in Europe have been marked by a bitter cold and a heavy snowfall.

The winter of 1914-15 has been a most trying one for the armies of the world. The campaigns in Europe have been marked by a bitter cold and a heavy snowfall.

The winter of 1914-15 has been a most trying one for the armies of the world. The campaigns in Europe have been marked by a bitter cold and a heavy snowfall.

The winter of 1914-15 has been a most trying one for the armies of the world. The campaigns in Europe have been marked by a bitter cold and a heavy snowfall.

The winter of 1914-15 has been a most trying one for the armies of the world. The campaigns in Europe have been marked by a bitter cold and a heavy snowfall.

The winter of 1914-15 has been a most trying one for the armies of the world. The campaigns in Europe have been marked by a bitter cold and a heavy snowfall.

The winter of 1914-15 has been a most trying one for the armies of the world. The campaigns in Europe have been marked by a bitter cold and a heavy snowfall.

The winter of 1914-15 has been a most trying one for the armies of the world. The campaigns in Europe have been marked by a bitter cold and a heavy snowfall.

The winter of 1914-15 has been a most trying one for the armies of the world. The campaigns in Europe have been marked by a bitter cold and a heavy snowfall.

The winter of 1914-15 has been a most trying one for the armies of the world. The campaigns in Europe have been marked by a bitter cold and a heavy snowfall.

The winter of 1914-15 has been a most trying one for the armies of the world. The campaigns in Europe have been marked by a bitter cold and a heavy snowfall.

The winter of 1914-15 has been a most trying one for the armies of the world. The campaigns in Europe have been marked by a bitter cold and a heavy snowfall.

The winter of 1914-15 has been a most trying one for the armies of the world. The campaigns in Europe have been marked by a bitter cold and a heavy snowfall.

The winter of 1914-15 has been a most trying one for the armies of the world. The campaigns in Europe have been marked by a bitter cold and a heavy snowfall.

The winter of 1914-15 has been a most trying one for the armies of the world. The campaigns in Europe have been marked by a bitter cold and a heavy snowfall.

The winter of 1914-15 has been a most trying one for the armies of the world. The campaigns in Europe have been marked by a bitter cold and a heavy snowfall.

The winter of 1914-15 has been a most trying one for the armies of the world. The campaigns in Europe have been marked by a bitter cold and a heavy snowfall.

The winter of 1914-15 has been a most trying one for the armies of the world. The campaigns in Europe have been marked by a bitter cold and a heavy snowfall.

The winter of 1914-15 has been a most trying one for the armies of the world. The campaigns in Europe have been marked by a bitter cold and a heavy snowfall.

The winter of 1914-15 has been a most trying one for the armies of the world. The campaigns in Europe have been marked by a bitter cold and a heavy snowfall.

The winter of 1914-15 has been a most trying one for the armies of the world. The campaigns in Europe have been marked by a bitter cold and a heavy snowfall.

The winter of 1914-15 has been a most trying one for the armies of the world. The campaigns in Europe have been marked by a bitter cold and a heavy snowfall.

The winter of 1914-15 has been a most trying one for the armies of the world. The campaigns in Europe have been marked by a bitter cold and a heavy snowfall.

The winter of 1914-15 has been a most trying one for the armies of the world. The campaigns in Europe have been marked by a bitter cold and a heavy snowfall.

The winter of 1914-15 has been a most trying one for the armies of the world. The campaigns in Europe have been marked by a bitter cold and a heavy snowfall.

The winter of 1914-15 has been a most trying one for the armies of the world. The campaigns in Europe have been marked by a bitter cold and a heavy snowfall.

The winter of 1914-15 has been a most trying one for the armies of the world. The campaigns in Europe have been marked by a bitter cold and a heavy snowfall.

PERSONAL

THE CHRISTIAN LEAGUE OF WOMEN. The Christian League of Women is a voluntary organization of women who are interested in the welfare of the community.

THE CHRISTIAN LEAGUE OF WOMEN. The Christian League of Women is a voluntary organization of women who are interested in the welfare of the community.

THE CHRISTIAN LEAGUE OF WOMEN. The Christian League of Women is a voluntary organization of women who are interested in the welfare of the community.

THE CHRISTIAN LEAGUE OF WOMEN. The Christian League of Women is a voluntary organization of women who are interested in the welfare of the community.

THE CHRISTIAN LEAGUE OF WOMEN. The Christian League of Women is a voluntary organization of women who are interested in the welfare of the community.

THE CHRISTIAN LEAGUE OF WOMEN. The Christian League of Women is a voluntary organization of women who are interested in the welfare of the community.

THE CHRISTIAN LEAGUE OF WOMEN. The Christian League of Women is a voluntary organization of women who are interested in the welfare of the community.

THE CHRISTIAN LEAGUE OF WOMEN. The Christian League of Women is a voluntary organization of women who are interested in the welfare of the community.

THE CHRISTIAN LEAGUE OF WOMEN. The Christian League of Women is a voluntary organization of women who are interested in the welfare of the community.

THE CHRISTIAN LEAGUE OF WOMEN. The Christian League of Women is a voluntary organization of women who are interested in the welfare of the community.

THE CHRISTIAN LEAGUE OF WOMEN. The Christian League of Women is a voluntary organization of women who are interested in the welfare of the community.

THE CHRISTIAN LEAGUE OF WOMEN. The Christian League of Women is a voluntary organization of women who are interested in the welfare of the community.

THE CHRISTIAN LEAGUE OF WOMEN. The Christian League of Women is a voluntary organization of women who are interested in the welfare of the community.

THE CHRISTIAN LEAGUE OF WOMEN. The Christian League of Women is a voluntary organization of women who are interested in the welfare of the community.

THE CHRISTIAN LEAGUE OF WOMEN. The Christian League of Women is a voluntary organization of women who are interested in the welfare of the community.

THE CHRISTIAN LEAGUE OF WOMEN. The Christian League of Women is a voluntary organization of women who are interested in the welfare of the community.

THE CHRISTIAN LEAGUE OF WOMEN. The Christian League of Women is a voluntary organization of women who are interested in the welfare of the community.

THE CHRISTIAN LEAGUE OF WOMEN. The Christian League of Women is a voluntary organization of women who are interested in the welfare of the community.

THE CHRISTIAN LEAGUE OF WOMEN. The Christian League of Women is a voluntary organization of women who are interested in the welfare of the community.

THE CHRISTIAN LEAGUE OF WOMEN. The Christian League of Women is a voluntary organization of women who are interested in the welfare of the community.

THE CHRISTIAN LEAGUE OF WOMEN. The Christian League of Women is a voluntary organization of women who are interested in the welfare of the community.

THE CHRISTIAN LEAGUE OF WOMEN. The Christian League of Women is a voluntary organization of women who are interested in the welfare of the community.

THE CHRISTIAN LEAGUE OF WOMEN. The Christian League of Women is a voluntary organization of women who are interested in the welfare of the community.

THE CHRISTIAN LEAGUE OF WOMEN. The Christian League of Women is a voluntary organization of women who are interested in the welfare of the community.

THE CHRISTIAN LEAGUE OF WOMEN. The Christian League of Women is a voluntary organization of women who are interested in the welfare of the community.

THE CHRISTIAN LEAGUE OF WOMEN. The Christian League of Women is a voluntary organization of women who are interested in the welfare of the community.

THE CHRISTIAN LEAGUE OF WOMEN. The Christian League of Women is a voluntary organization of women who are interested in the welfare of the community.

THE CHRISTIAN LEAGUE OF WOMEN. The Christian League of Women is a voluntary organization of women who are interested in the welfare of the community.

THE CHRISTIAN LEAGUE OF WOMEN. The Christian League of Women is a voluntary organization of women who are interested in the welfare of the community.

THE CHRISTIAN LEAGUE OF WOMEN. The Christian League of Women is a voluntary organization of women who are interested in the welfare of the community.

THE CHRISTIAN LEAGUE OF WOMEN. The Christian League of Women is a voluntary organization of women who are interested in the welfare of the community.

Ladies' Tailoring ...Department... Has now been added to our list of special advantages. We take your measure, send the suit once for fitting and furnish the most complete and artistic man-tailored suits to be had in any market.

25 Per Cent Lower than regular charges. Samples of Suiting, Lining and Styles, and reduced price ready for inspection. SUITS THAT FIT ARE MADE ESPECIALLY FOR THE WEARER. Not for anyone who may happen to buy them.

Weiser Trading Co. "IS A GOOD PLACE TO TRADE" Ten Dimes a Week. A ROYAL INSULT. THE WEISER NATIONAL BANK WEISER, IDAHO.

Sommerscamp & Cordell UNDERTAKERS and Embalmers. Day Phone 711. Night Phone and Sunday 1111-1112. 14-14-15. For the per cent.

NORTHAM & MCGANN Funeral Directors and Licensed Embalmer. Lady Assistant. Phone 105 290. 14-14-15. For the per cent.

Printed by the Signal Press, 40, South Street, Singapore.