

PERILOUSLY INJURED

A Death Sentence hangs a Terror Cloud over the Home of a Poor Man by Reason of His Fall.

New Saw Mill
Patented Here lately all plans have been drawn and ready to be put in motion.

Gas, Oil, Flooring, Sash, Blinds, etc.
The Westlake House

Pilgrims to the Seven Devils
Store at Elmer

THE HOTEL WEISER
NEWLY OPENED

COSY ROOMS
Special Dinner for Ladies

Sweet Steak
Kemp's Market

HARDWARE

Services and Bridges
The Right Hardware

MEASURES
SPECIALTY IDEAS

BLACKSMITHING
REPAIR SHOP

FURNITURE

MOSMAN
ALBERT

GRAN

WHEELS
The Eldredge \$24.00

The Belvidere
\$20.00

A Fleishy Consumptive

Scott's Emulsion

Body Knows

WHEELS
The Eldredge \$24.00

THE HOTEL WEISER

THE WEISER SIGNAL

Mayor and Board of Council Members
Washington County

Resolved that the Mayor and Board of Council Members of Washington County...

Weiser
The Weiser Signal is published weekly...

WHEELS
The Eldredge \$24.00

The Belvidere
\$20.00

A Fleishy Consumptive

Scott's Emulsion

Body Knows

Resolved that the Mayor and Board of Council Members of Washington County...

Weiser
The Weiser Signal is published weekly...

WHEELS
The Eldredge \$24.00

The Belvidere
\$20.00

A Fleishy Consumptive

Scott's Emulsion

Body Knows

WHEELS
The Eldredge \$24.00

The Belvidere
\$20.00

A Fleishy Consumptive

Scott's Emulsion

Body Knows

WHEELS
The Eldredge \$24.00

The Belvidere
\$20.00

A Fleishy Consumptive

Scott's Emulsion

Body Knows

WHEELS
The Eldredge \$24.00

The Belvidere
\$20.00

A Fleishy Consumptive

Scott's Emulsion

Body Knows

WHEELS
The Eldredge \$24.00

How Do You Do, Sir?



THE VICTORIA SHIRT
 Superior quality and fit. Made of the finest material. Available in various colors and sizes. Price, 50c.

THE VICTORIA TROUSER
 Tailor-made fit. Made of the finest material. Available in various colors and sizes. Price, \$1.00.

THE VICTORIA COAT
 Superior quality and fit. Made of the finest material. Available in various colors and sizes. Price, \$10.00.

THE VICTORIA HAT
 Superior quality and fit. Made of the finest material. Available in various colors and sizes. Price, 2.00.

Fall Furniture Season



NEW HARDWARE HOUSE
 Full line of Hardware of all descriptions.
 Majestic Steel Ranges and Round Oak Stoves
 Air Tight Wood Heaters
 Mitchell Wagons and Hacks
 Opp & Davis
 My Grandfather's Clock
 Mind Your Eyes
 DRUGS
 THE BARGAIN STORE
 Neal & Swanson
 General Merchandise
 THE PHARMACY
 BRING YOUR PRESCRIPTIONS TO US
 WE MAKE A HORSE LAUGH
 HARNESS

Butterick Patterns



WE KEEP THE CELEBRATED CUT & BURN
STOES FOR LADIES AND CHILDREN
 Manufactured in Brooklyn, New York

M. E. SOMMERKAMP & CO.

NEW YORK

SEVEN DEVILS
SALE PRICE
COUNCIL

INDIAN TALKS

ASSAY OFFICE

SOCIETY

Gold Prices Feel Little

MORRIS SUMNER

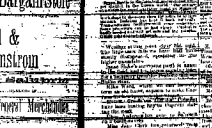
Commercial Men and Travelers

Cohen & Criss

Cohen & Criss
 The Busiest Mercantile Firm in Washington county will speak to you further in this space
 Wait for what we have to say as it will be to your interest

Cohen & Criss
 Commercial Men and Travelers

THE VICTORIA



I am Fishing for Trade

Choice Family Groceries
Opp & Davis
ROUGH DRESSED LUMBER

There's Room for the World

INLAND HOTEL